

# ROCKFON® COLOR-ALL™

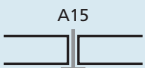
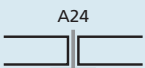
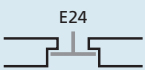
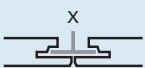
- A range of inspirational tiles with a smooth, matt finish **giving colours their true expression**
- **Three different edge types** create visible grid, semi-concealed or concealed style
- **Optimal sound absorption** and dimensionally stable even at humidity levels of up to 100%



## PRODUCT DESCRIPTION

- Stone wool panel
- Visible side: smooth coloured fleece
- Rear side: back fleece
- Painted edges

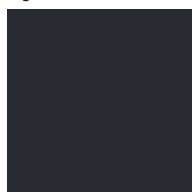
## ASSORTMENT

Edge detail	Module size (mm)	Weight (kg/m <sup>2</sup> )	Installation system
 A15	600 x 600 x 15	2.2	T15
 A24	600 x 600 x 15	2.2	T24
 E24	600 x 600 x 20	3.4	T24
 X	600 x 600 x 22	3.7	System X

CHARCOAL - 09

NCS S 9000-N

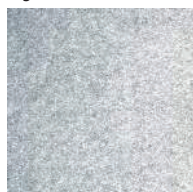
Light reflection: 4%



MERCURY - 62

-

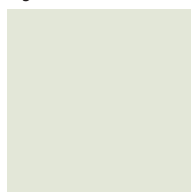
Light reflection: 44%



STONE - 01

NCS S 1500-N

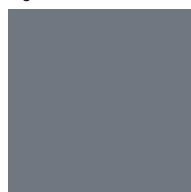
Light reflection: 55%



CONCRETE - 06

NCS S 6500-N

Light reflection: 16%



GRAVEL - 03

NCS S 3502-B

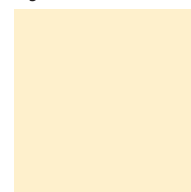
Light reflection: 34%



STUCCO - 20

NCS S 0505-Y40R

Light reflection: 70%



NCS codes are closest colour match. The actual colour of the ceiling tiles may deviate slightly from printed colours due to the texture of the surface and the underlying colour of stone wool. Samples of the coloured surfaces are available upon request.

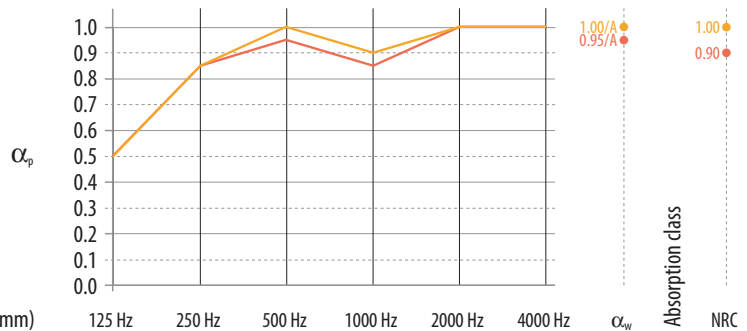


## PERFORMANCES



### Sound absorption

$\alpha_w$  up to 1.00 (Class A)



Thickness (mm) / Suspension (incl. tile – mm)	125 Hz	250 Hz	500 Hz	1000 Hz	2000 Hz	4000 Hz	$\alpha_w$	Absorption class	NRC
15 / 200	0.50	0.85	0.95	0.85	1.00	1.00	0.95	A	0.90
20 - 22 / 205	0.50	0.85	1.00	0.90	1.00	1.00	1.00	A	1.00



### Reaction to fire

A1  
A2-s1,d0 (Mercury)



### Light reflection

Colour-dependent,  
see previous page



### Humidity & sag resistance

Up to 100% RH  
1/C/0N



### Cleaning

Vacuum



### Hygiene

Stone wool provides  
no sustenance to  
microorganisms



### Environment

100% recyclable



### Indoor environment

A selection of ROCKFON  
products have been awarded

