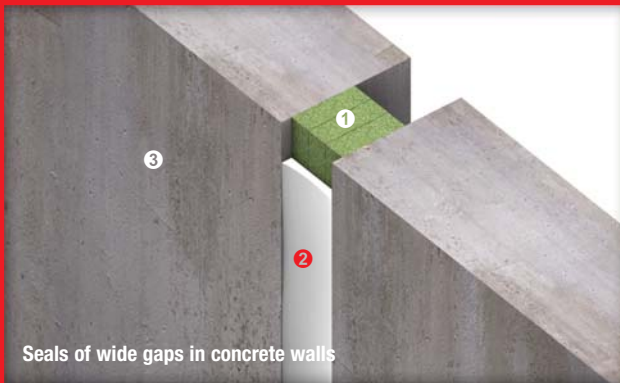


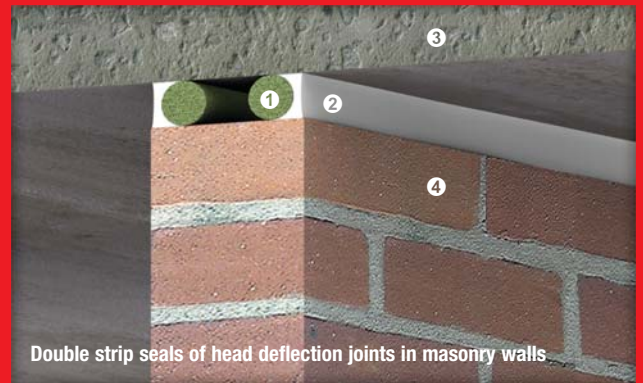
Seals of joints and gaps in concrete floors



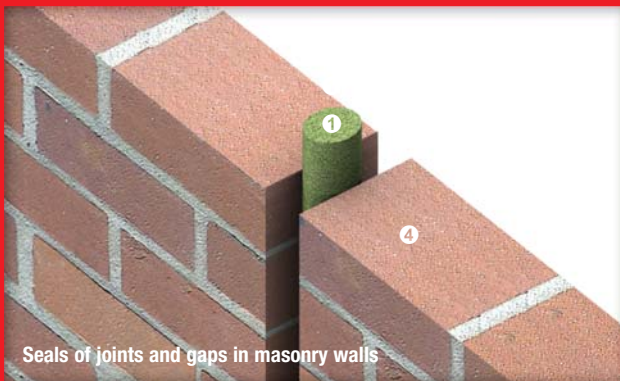
Single strip seals of head deflection joints in masonry walls



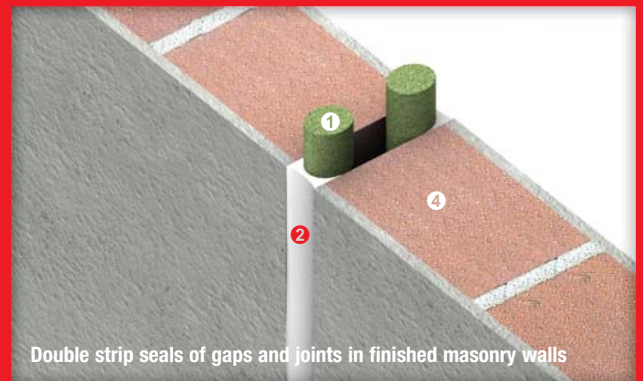
Seals of wide gaps in concrete walls



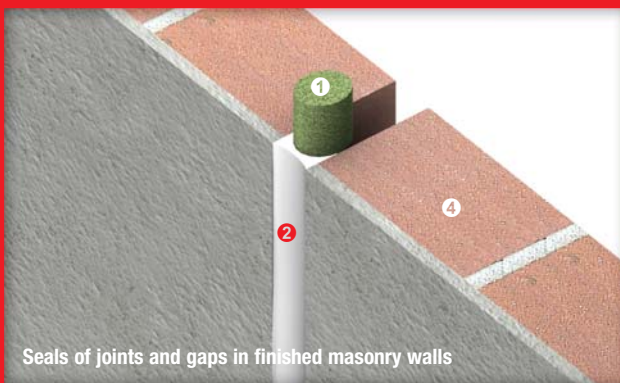
Double strip seals of head deflection joints in masonry walls



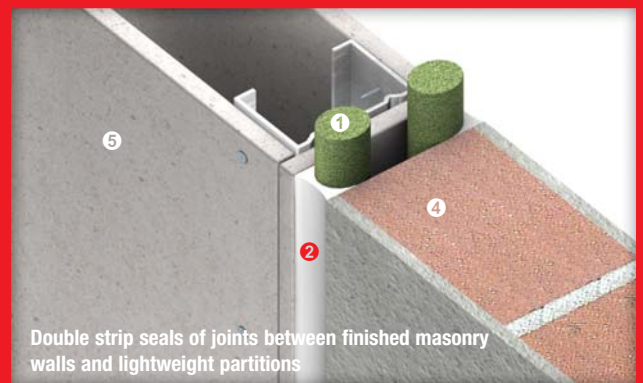
Seals of joints and gaps in masonry walls



Double strip seals of gaps and joints in finished masonry walls



Seals of joints and gaps in finished masonry walls



Double strip seals of joints between finished masonry walls and lightweight partitions

Up to -/240/240 fire resistance in accordance with the requirements of BS 476: Part 20: 1987 and/or AS 1530: Part 4: 2005, depending on applications and types of penetrating elements

- ① PROMASEAL® IBS™ dimension in accordance with the table on page 34
- ② Joints and gaps filled with PROMASEAL®-A Acrylic Sealant, minimum depth in accordance with the table on page 34
- ③ Fire resistant concrete floors or walls
- ④ Fire resistant masonry walls
- ⑤ Fire resistant steel/timber framed lightweight partitions